

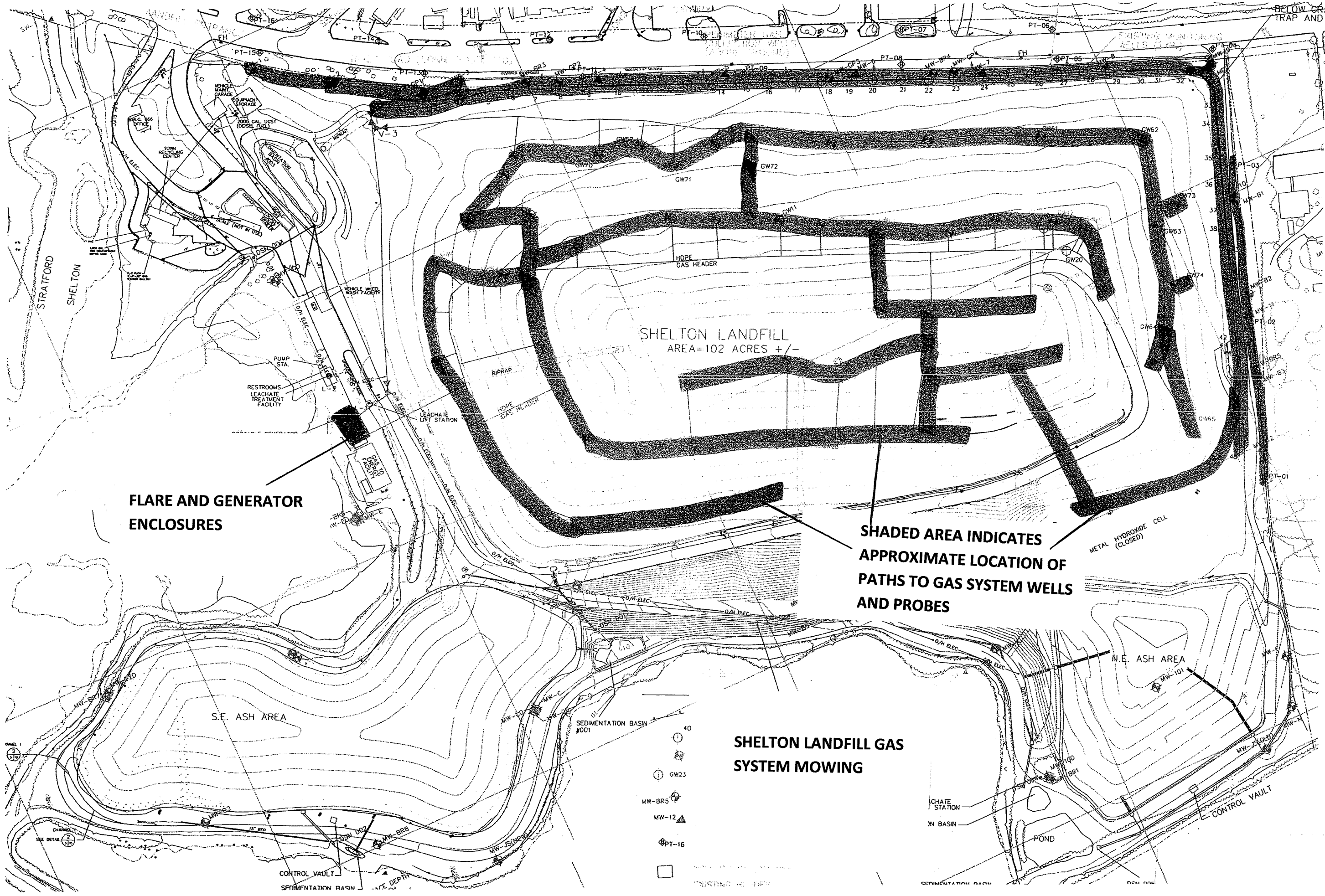
BI-WEEKLY MOWING TO OCCUR IN SHADED AREAS

METAL HYDROXIDE AREA MONTHLY MOWING

**SHELTON LANDFILL
BI-WEEKLY MOWING
AND MONTHLY METAL
HYDROXIDE AREA MOWING**

- ⊕ 40
- ⊕ GW23
- ⊕ MW-BR5
- ⊕ MW-12
- ⊕ PT-16
- EXISTING HEADER

NOTE: ANNUAL TRIMMING SHALL INCLUDE TRIMMING OF ORNAMENTAL PLANTINGS WITHIN BI-WEEKLY MOWING AREA

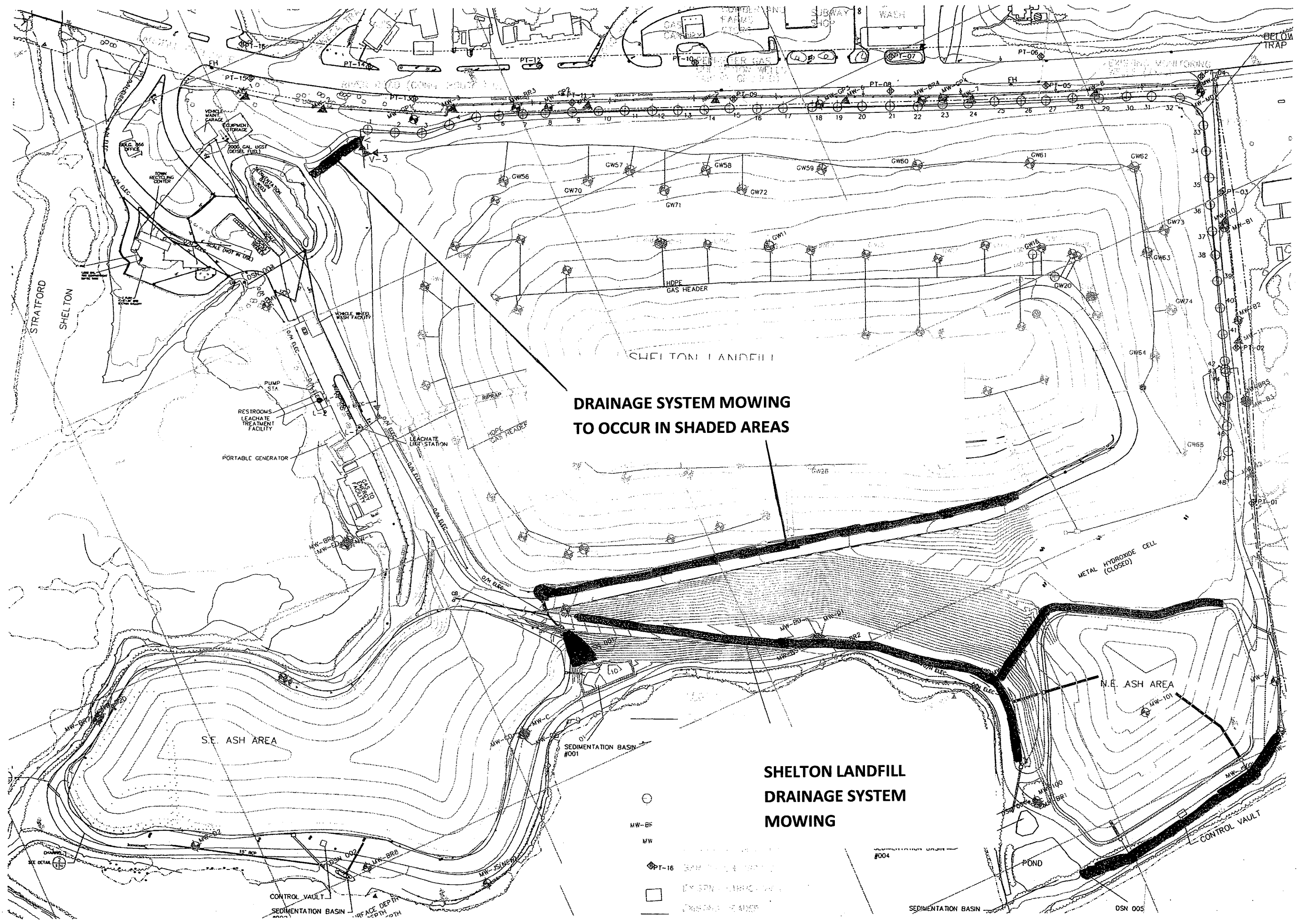


FLARE AND GENERATOR ENCLOSURES

SHADED AREA INDICATES APPROXIMATE LOCATION OF PATHS TO GAS SYSTEM WELLS AND PROBES

SHELTON LANDFILL GAS SYSTEM MOWING

- 40
- GW23
- ▲ MW-BR5
- ▲ MW-12
- PT-16
-



**DRAINAGE SYSTEM MOWING
TO OCCUR IN SHADED AREAS**

**SHELTON LANDFILL
DRAINAGE SYSTEM
MOWING**

- MW-BF
- MW
- ⊕ PT-16
- EXISTING BUILDING
- EXISTING ALLEYS

SEDIMENTATION BASIN #004
POND
SEDIMENTATION BASIN
OSN 005

S.E. ASH AREA

N.E. ASH AREA

METAL HYDROXIDE CELL
(CLOSED)

SHELTON LANDFILL

PORTABLE GENERATOR

RESTROOMS
LEACHATE
TREATMENT
FACILITY

PUMP
STA.

STRATFORD

SHELTON

CONTROL VAULT

CONTROL VAULT
SEDIMENTATION BASIN
#001

SEDIMENTATION BASIN
#001

POND

SEDIMENTATION BASIN
#004

OSN 005

2000 GAL. UST
(GROSS CAP.)

SCALE (NOT IN USE)

WHOLE WASH
MACHINE

EQUIPMENT
STORAGE

TOILET
RECLINING
CONTAINER

PT-15

PT-14

PT-13

PT-12

PT-11

PT-10

PT-09

PT-08

PT-07

PT-06

PT-05

PT-04

PT-03

PT-02

PT-01

PT-00

PT-00

PT-00

PT-00

PT-00

PT-00

PT-00

PT-00

PT-00

PT-00

PT-00

PT-00

PT-00

PT-00

PT-00

PT-00

PT-00

PT-00

PT-00

PT-00

PT-00

PT-00

PT-00

PT-00

PT-00

PT-00

PT-00

PT-00

PT-00

PT-00

PT-00

PT-00

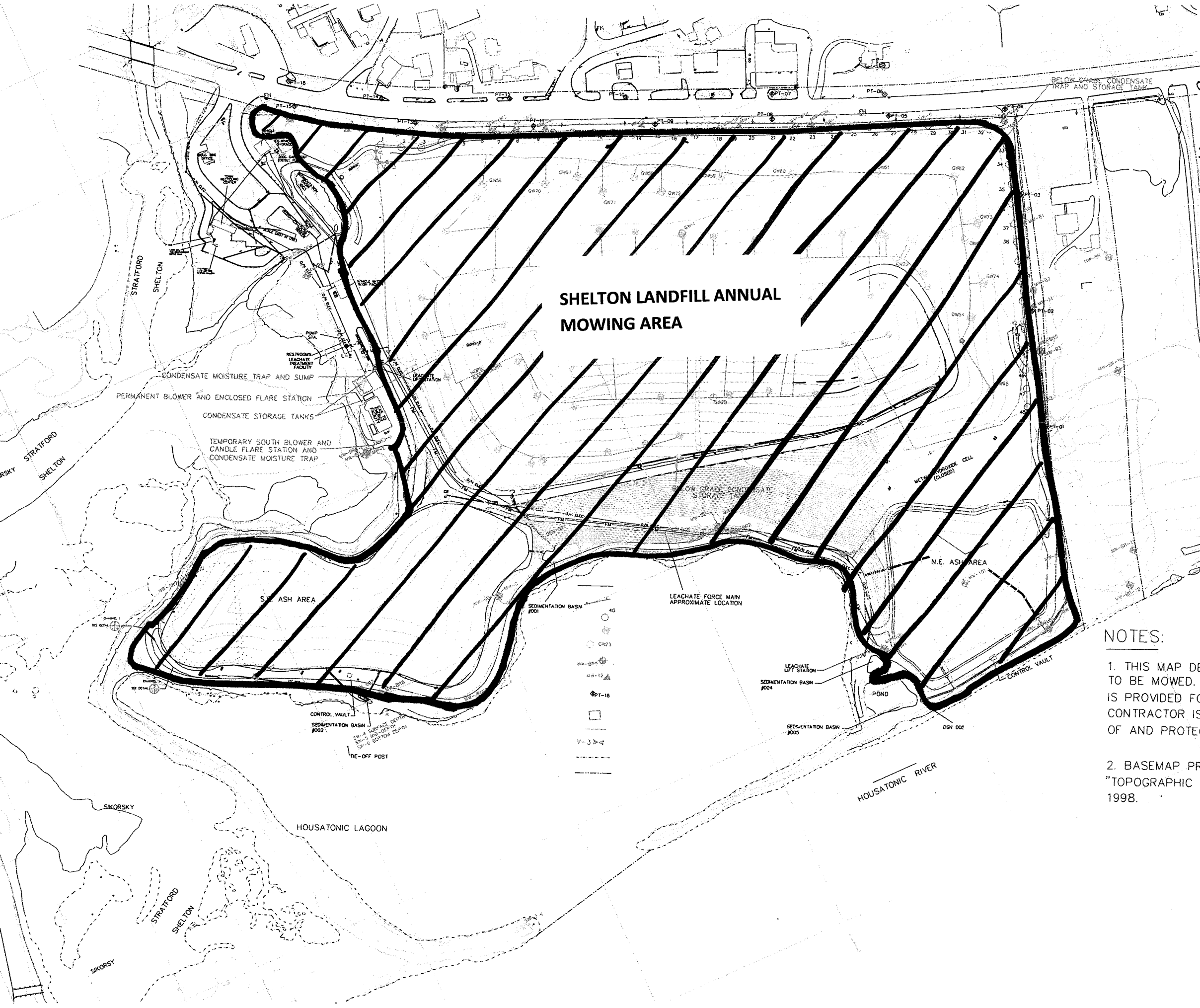
PT-00

PT-00

PT-00

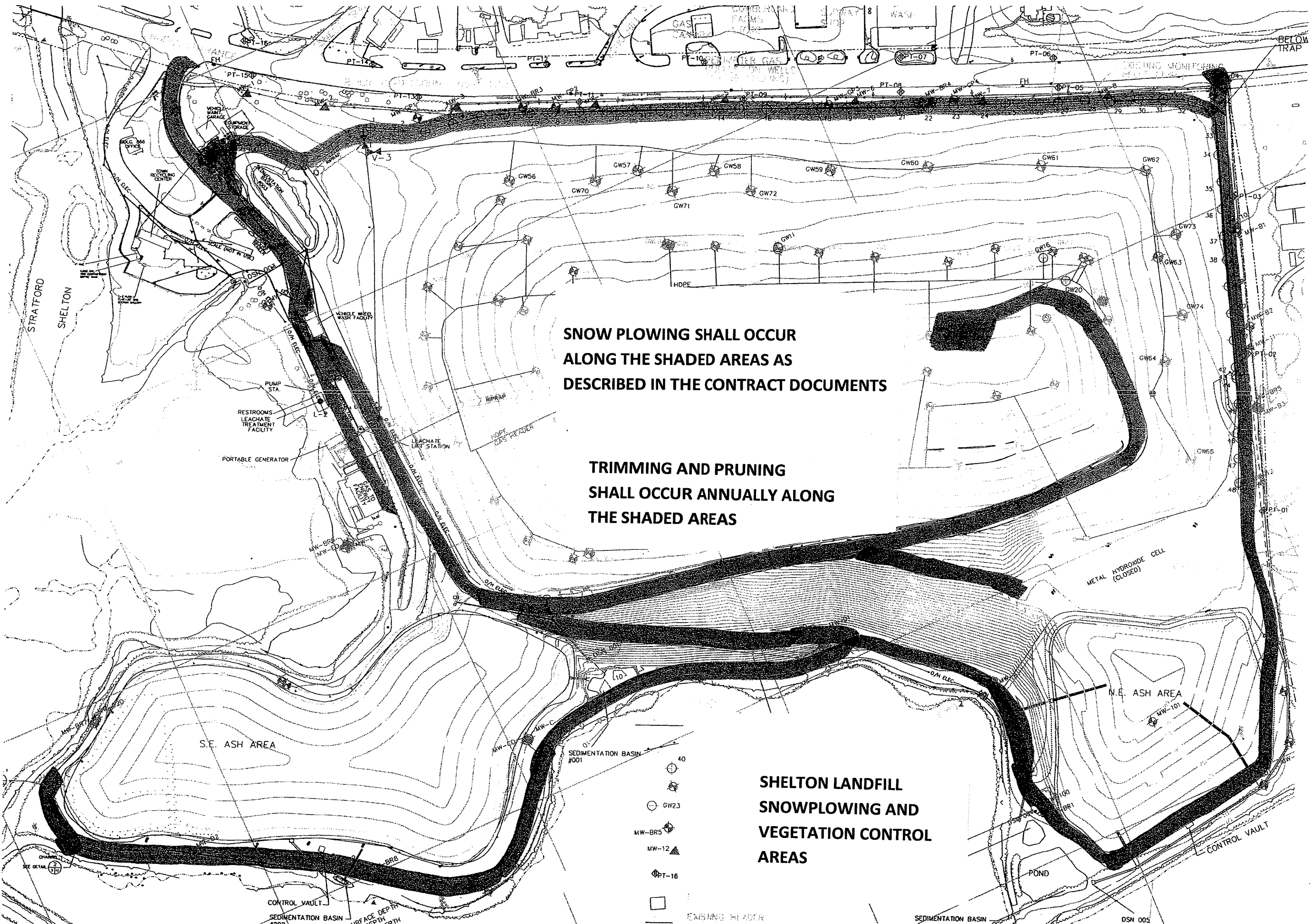
PT-00

SHELTON LANDFILL ANNUAL MOWING AREA



NOTES:

1. THIS MAP DELINEATES THE AREAS TO BE MOWED. THE LOCATION OF ANY UTILITIES IS PROVIDED FOR INFORMATIONAL PURPOSES ONLY. CONTRACTOR IS RESPONSIBLE FOR VERIFYING THE LOCATIONS OF AND PROTECTING ALL UTILITIES.
2. BASEMAP PROVIDED BY FUSS & O'NEILL "TOPOGRAPHIC SURVEY" DATED AUGUST 1998.



**SNOW PLOWING SHALL OCCUR
ALONG THE SHADED AREAS AS
DESCRIBED IN THE CONTRACT DOCUMENTS**

**TRIMMING AND PRUNING
SHALL OCCUR ANNUALLY ALONG
THE SHADED AREAS**

**SHELTON LANDFILL
SNOWPLOWING AND
VEGETATION CONTROL
AREAS**

- 40
- GW23
- MW-BR5
- MW-12
- PT-16
- EXISTING HEADER